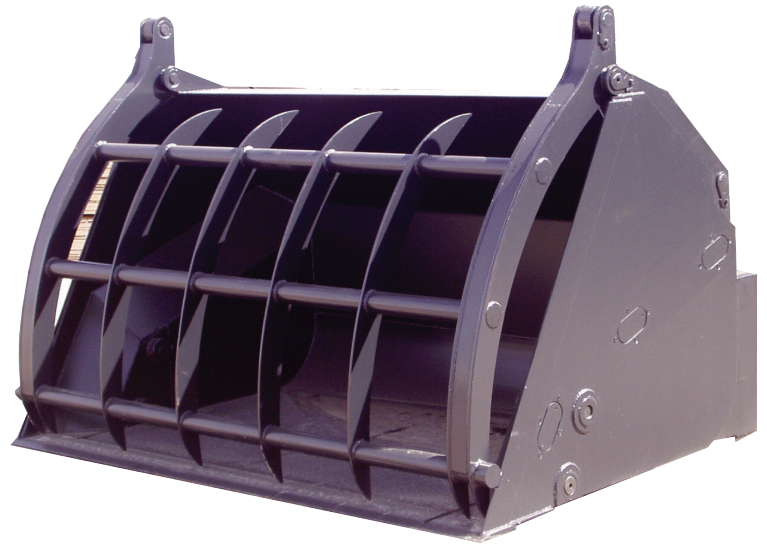


Grapple Buckets

Light material high dump buckets with grapple are for all the wheel loaders with operating weight up to 64 t (140 lb). Buckets dumping cylinders are located on the sidewalls which gives a full empty space inside the bucket without any beams or other parts. This style of construction will avoid material freezing inside at wintertime and material will move easily in and out of the bucket.

Buckets are equipped with extra cylinders for strong grapple which holds tightly material inside.

All buckets cylinders have inside oil suspension for both ends. Buckets unloading heights are increased about 1500 mm (59 in). Buckets dimensions are shown with straight welded cutting edge and bolt-on edges are an option.



Technical specification

Product Code	Volume		Width		Depth		Height with grapple		Weight		Maximum material density	
	m ³	yd ³	mm	in	mm	ft in	mm	ft in	kg	lb	kg/m ³	lb/yd ³
20030SOH	3,0	3,9	2550	100"	1500	4'11"	1700	5'7"	1900	4,180	1000	1,680
20040SOH	4,0	5,2	2550	100"	1710	5'7"	1900	6'3"	2400	5,280	1000	1,680
20050SOH	5,0	6,5	2750	108"	1750	5'8"	2000	6'6"	2600	5,720	1000	1,680
20060SOH	6,0	7,9	3000	118"	1790	5'10"	2150	7'0"	2900	6,380	1000	1,680
20070SOH	7,0	9,2	3000	118"	2000	6'6"	2230	7'4"	3400	7,480	1000	1,680
20080SOH	8,0	10,5	3200	125"	2000	6'6"	2320	7'7"	3800	8,370	1000	1,680
20090SOH	9,0	11,8	3500	137"	2050	6'9"	2350	7'8"	4700	10,350	1000	1,680
20100SOH	10,0	13,1	3700	146"	2150	7'0"	2500	8'2"	5300	11,670	1000	1,680